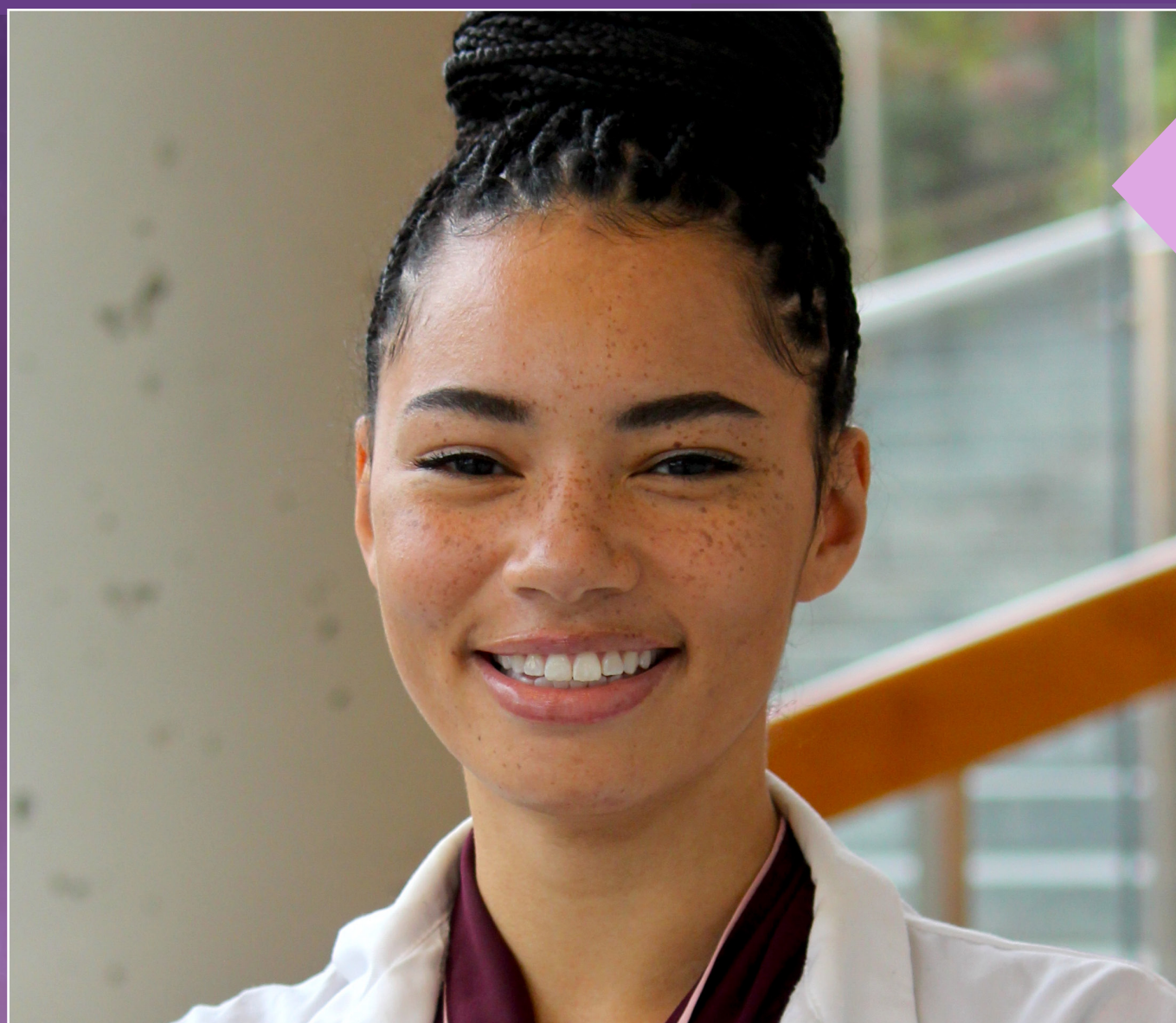


# EINSTEIN CELEBRATES WOMEN'S HISTORY MONTH

During Women's History Month we honor the important, life-changing contributions women at Einstein have made in science and research. At Einstein, we work to foster an environment where women can thrive.

Here, we recognize exemplary Einstein and Montefiore community members and how they have made history at Einstein.



**DESTINEY KIRBY**

M.D./M.P.H. Student

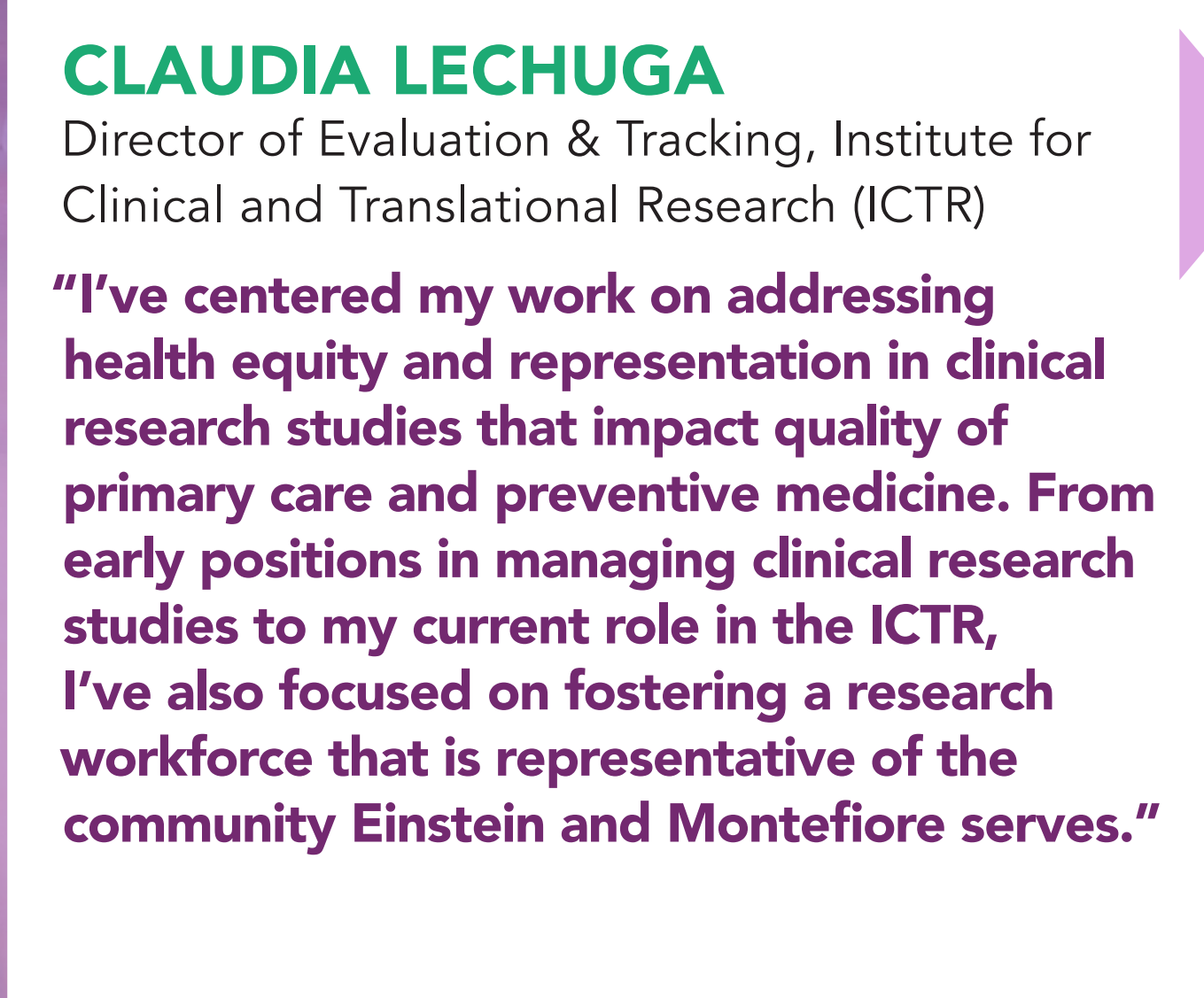
"I've dedicated myself to advocating for students from marginalized groups and creating a more equitable campus environment. Whether it be through community organizing and demonstrations, executive board leadership in multiple student groups, mentorship, public health work, or my work at the hospital, I am always trying to create a better future for students at Einstein."



**STEFANIE JUELL**

Executive Director, Office of Human Research Affairs

"When I became executive director, I worked to diversify the committees that oversee human subjects research at Einstein and Montefiore, including the institutional review board, the conflict of interest committee, and the global research committee. I prioritize pay equity, highlight invisible labor, and equally distribute nonpromotable, emotional labor, which often falls disproportionately on women."



**CLAUDIA LECHUGA**

Director of Evaluation & Tracking, Institute for Clinical and Translational Research (ICTR)

"I've centered my work on addressing health equity and representation in clinical research studies that impact quality of primary care and preventive medicine. From early positions in managing clinical research studies to my current role in the ICTR, I've also focused on fostering a research workforce that is representative of the community Einstein and Montefiore serves."



**RENEE RODRIGUEZ**

Manager, Special Programs and Events, Graduate Programs in the Biomedical Sciences

"I orchestrate programs and events for students during all phases of their scientific journeys. Whether I'm seeing a high school student entering a lab for the first time or watching a Ph.D. student present their science at a campus poster session, it's been a true joy to witness. My hope is that the events I produce enrich their experience at Einstein."



**LYNNE M. HOLDEN, M.D.**

Professor, Emergency Medicine  
Senior Associate Dean, Diversity and Inclusion  
Vice-Chair, Diversity and Inclusion, Department of Emergency Medicine

"In my role as Dean, my four guiding pillars are fostering academic excellence, promoting wellness, building collaborations, and enhancing mentoring. Weaving diversity into the fabric of Einstein is crucial to our success as an equitable community of students, faculty, and staff dedicated to socially just, scientific discoveries and excellent, empathetic clinical care."

Dr. Marie Daly, the first Black woman in the United States to earn a Ph.D. in chemistry, taught biochemistry, worked to attract women from underrepresented groups to pursue careers in science, and conducted groundbreaking research on health and the heart here at Einstein. Each year, we honor her legacy with a memorial lecture. Our student-led organization, the Women's Networking Group, also celebrates women's contributions to the field, and established its annual Women in Science Day, centered on the challenges and triumphs of women in academia.

